



Peter Enste
Institute for Work and Technology

Prof. Dr. Yeung Ja Yang
Kyungnam University

Ageing in Germany and Korea

Similarities and differences

Seoul, 08.10.2013

Central research organisation
of the Westfälische Hochschule
Gelsenkirchen Bocholt
Recklinghausen University of
Applied Sciences in cooperation
with the Ruhr-Universität Bochum



RUHR
UNIVERSITÄT
BOCHUM

RUB

Agenda

- **Population Development**
- **Living conditions**
 - **Income situation**
 - **Status of Health**
- **Conclusion and statements for discussion**

Never getting old...?

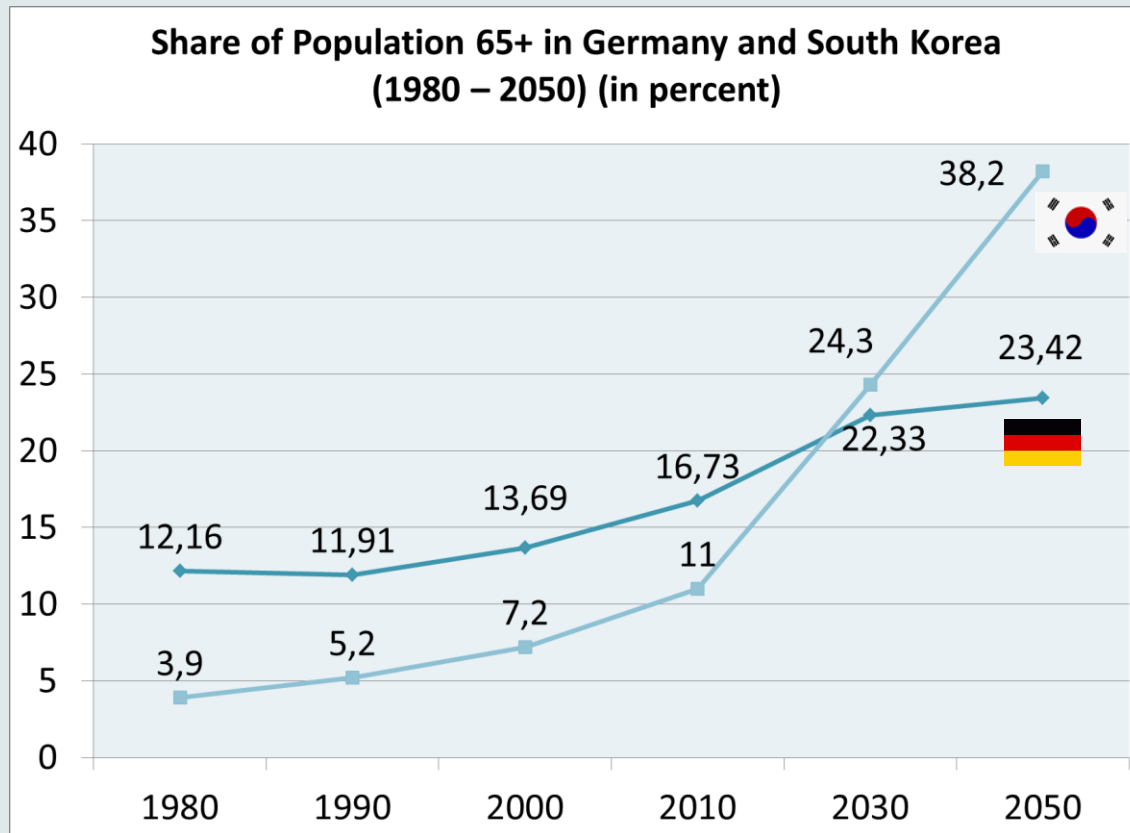
Gate at the entrance of the
secret garden
at Changdeokgung Palace

Getting old in a healthy way!



Population development

Comparing Germany and Korea



Source: Destatis 2009 & KSIS 2010

The present

- with nearly 20% Germany is an „old country“
- with 11% Korea is still a „young country“ but...

Development

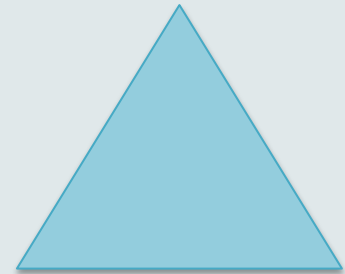
- at about 2025 Korea will overtake Germany

The future

- Korea: In 2050 nearly 40% will be 65 or older
- Germany: Every fourth person will be 65 or older

The process of „Triple Ageing“

- The share of older persons is rising
- The absolute number of older persons is rising
- The share and the absolute number of very old people (80+) are rising



Population 60+: Share of persons aged 80 years or older		
	2012	2050
Germany	24%	32%
Korea	14%	33%

Source: United Nations 2012

Living conditions of older people

„same same...but different“

Global AgeWatch Index

Income
security

Health
status

Employment
and
education

Enabling
environment



South Korea



Germany

Ranking

1. Sweden
2. Norway
3. Germany
-
66. Ukraine
67. Korea

Social Inequalities at age

Income

Age poverty rates in Germany and South Korea (in percent)

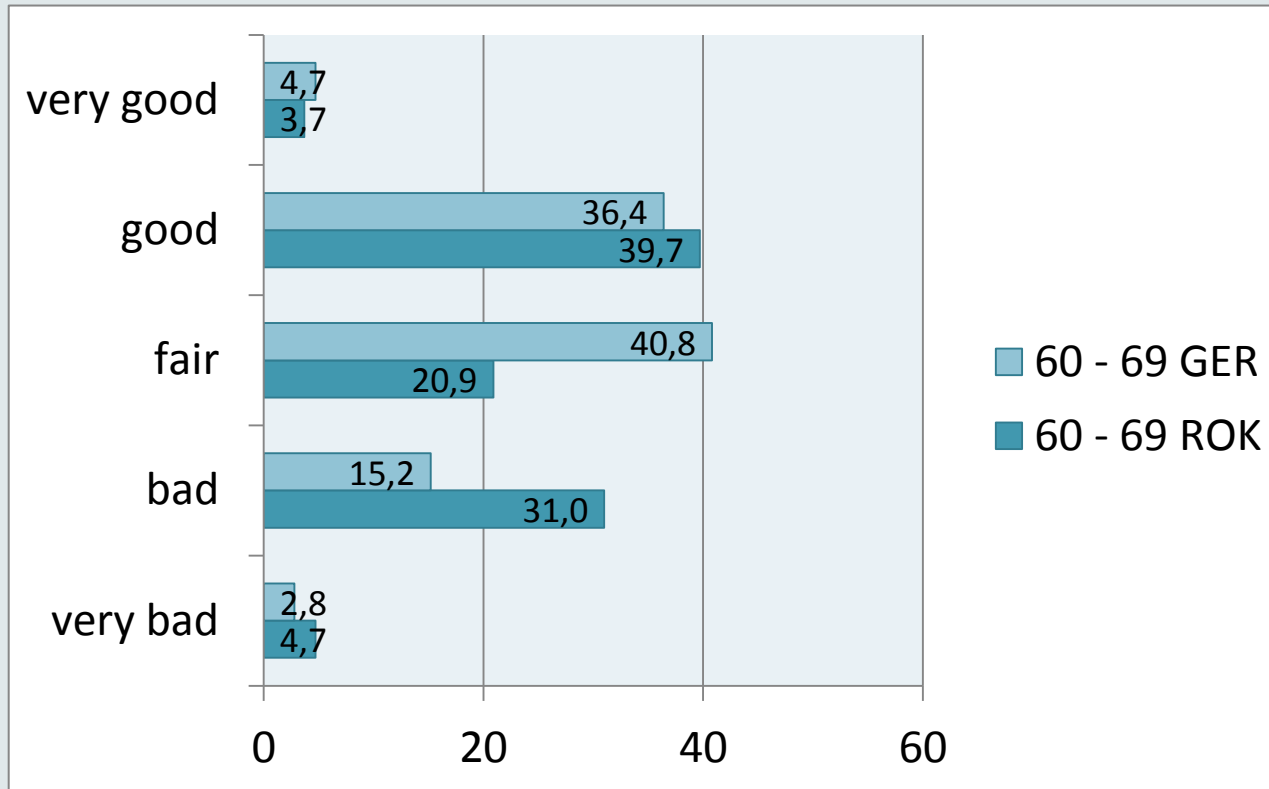
	All 65+	Agegroups		Sex		Household Types	
		66-75	75+	female	Male	Single	Couple
Germany	8,4	6,5	11,1	10,8	5,1	15,0	4,7
Korea	45,1	43,3	49,8	47,2	41,8	76,6	40,8

Source: OECD 2011

- South Korea has one of the highest poverty rates worldwide
- Significant differences by age, sex and household types in both countries

Subjective status of health

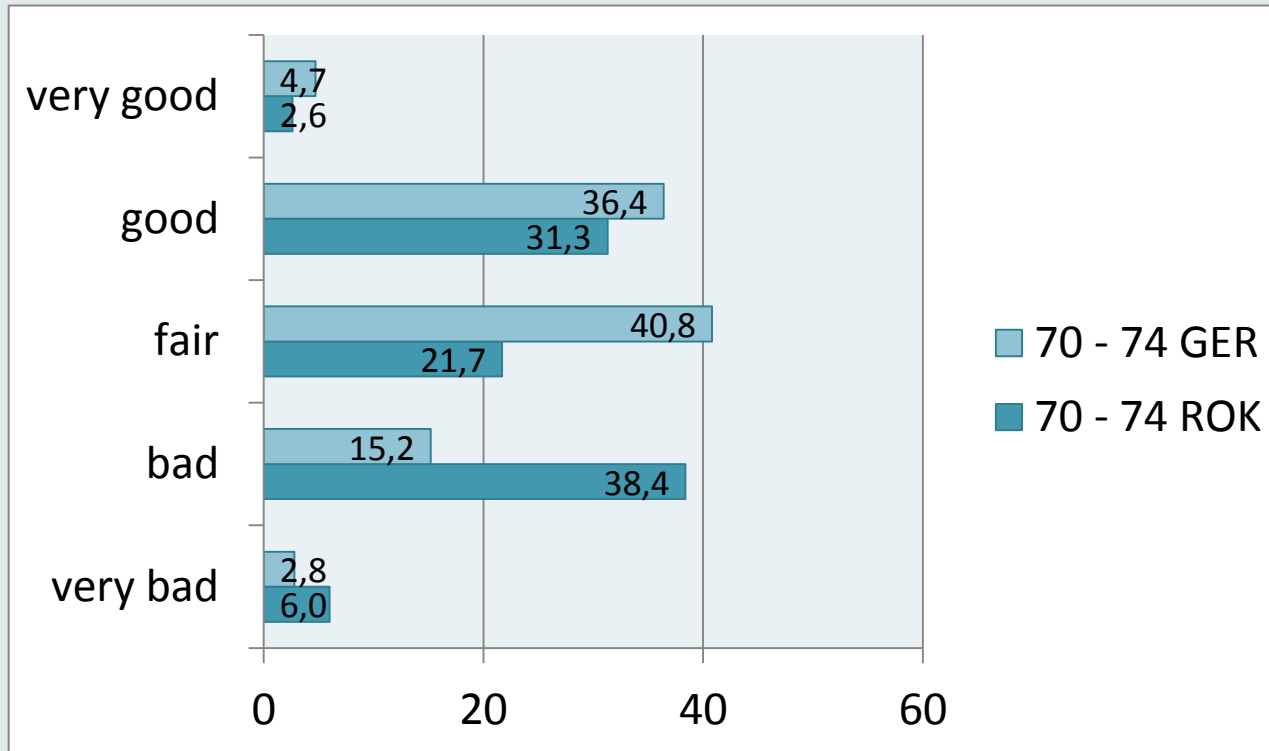
60 – 69 years



Source: EQLS 2012 & Korean Institute for Health and Social Affairse

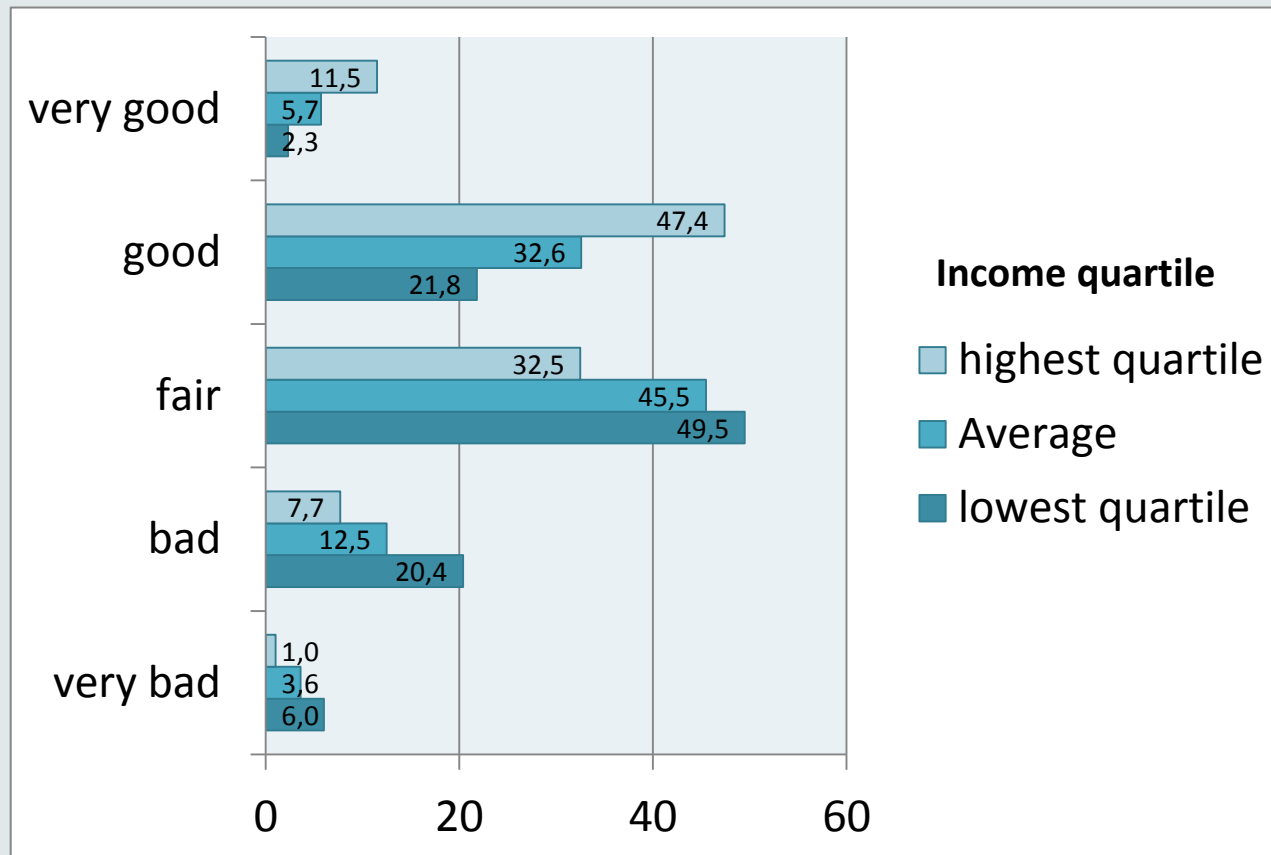
Subjective status of health

70 - 74 years



Source: EQLS 2012 & Korean Institute for Health and Social Affairse

Subjective status of health of older persons in Germany



Conclusion and statements for discussion

- The group of people, who need help by activities of daily life is growing fast
 - The majority of older people wants to stay in their own homes as long as possible
 - The motto „outpatient before inpatient“ leads to a high rate of homecare
 - The number of „one-person-households“ ist growing
-
- Identification of the real needs of the heterogenous groups of the elderly
 - Development of business models including low- and premium price services
 - Expansion of consumer protection
 - Building up an age friendly environment

대단히 고맙습니다

Vielen Dank

Thank you

Literature:

HelpAge International (2013): Global AgeWatch Index 2013.

Korea Institute for Health and Social Affairs (2011): The Survey of Living Conditions and Welfare Needs of Korean Older Persons.

United Nations, Department of Economics and Social Affairs (2012): Population Ageing and Development.

